

Monocrystalline Solar Module

430W-455W Mono

182MM Cell 120 Half-cell Layout

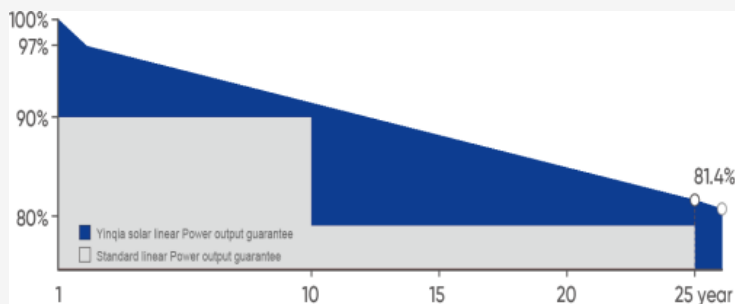
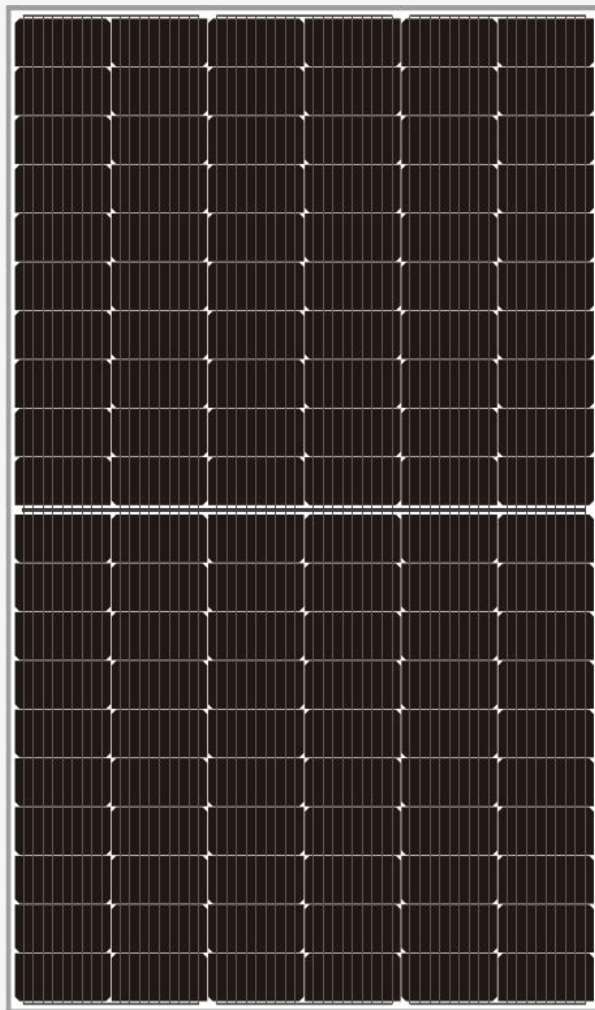
黄山银洽新能源 YinQia SOLAR

Features

- ◆ High cell efficiency with quality silicon material for long term output stability and reliability
- ◆ Rigorous quality control to meet highest international standards
- ◆ High transmittance low iron tempered glass with enhanced Stiffness and impact resistance
- ◆ Unique frame design with high mechanical strength for easy installation
- ◆ Advanced encapsulation material with multi-layer sheet lamination to provide efficient protection from the severest environmental conditions
- ◆ Outstanding electrical performance under high temperature and low irradiance conditions

Applications

- ◆ Any large or small on-grid or off-grid solar power stations
- ◆ Commercial and industrial building roof-top systems
- ◆ Residential roof-top systems
- ◆ Any commercial or industrial ground mount systems
- ◆ Other industrial or commercial applications



Linear performance Warranty

12
YEARS

Quality
Warranty

25
YEARS

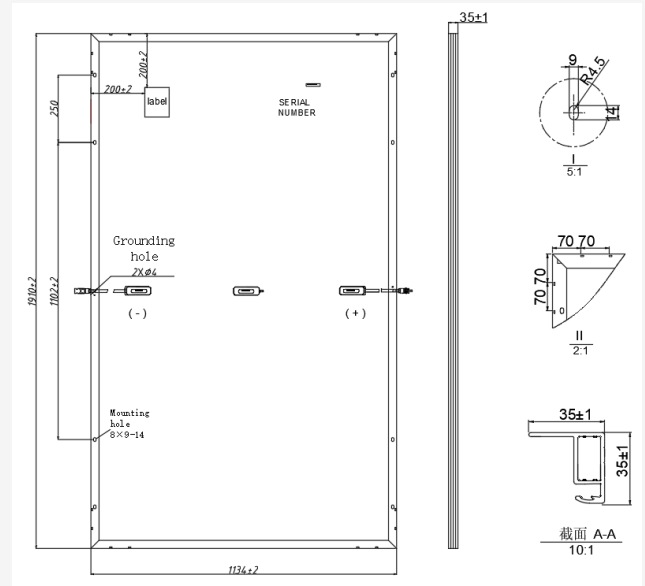
Power
Warranty



- . ISO9001:2015QMS
- . ISO14001:2015EMS
- . ISO45001:2018OHSMS
- . IEC/EN 61215, IEC/EN 61730 Standard

MECHANICAL CHARACTERISTICS

Solar Cells	Mono
NO.of Cells	120(6×20)
Dimensions	1910×1134×35mm
Weight	24kgs
Front Glass	3.2mm coated tempered glass
Frame	Anodized aluminium alloy
Junction Box	Ip68 rated(3 by pass diodes)
Output Cables	4.0mm ² 300mm Length can be customized
Connectors	Mc4 compatible
Mechanical load test	5400Pa



ELECTRICAL PARAMETERS

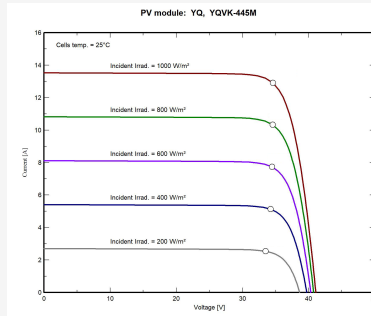
POWER CLASS	YQVK-430M		YQVK-440M		YQVK-445M		YQVK-450M		YQVK-455M	
	STC	NOCT	STC	NOCT	STC	NOCT	STC	NOCT	STC	NOCT
Maximum power (Pmax)	430W	322W	440W	330W	445W	334W	450W	337W	455W	341W
Open Circuit Voltage (Voc)	40.7V	38.42V	40.95V	38.47V	41.1V	38.64V	41.25V	38.81V	41.32V	39.05V
Short Circuit Current (Isc)	13.2A	11.05A	13.41A	11.29A	13.52A	11.36A	13.62A	11.44A	13.75A	11.5A
Voltage at Maximum power (Vmpp)	33.86V	31.49V	33.91V	31.54V	34.06V	31.68V	34.21V	31.82V	34.42V	32.01V
Current Maximum Power (Impp)	12.7A	10.24A	12.98A	10.46A	13.07A	10.54A	13.16A	10.61A	13.22A	10.66A
MODULE EFFICIENCY (%)	19.8		20.3		20.5		20.7		21.0	

STC:Irradiance 1000W/m²,cell temperature 25°C,AM 1.5G NOCT:Irradiance 800W/m²,ambient temperature 20°C,wind speed 1m/s,AM 1.5G

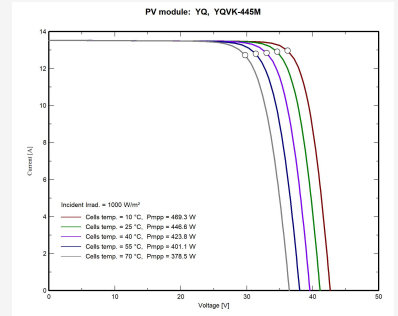
PACKING CONFIGURATION

Container	20'GP	40'HQ
Pieces per pallet	31	31+31
Pallets per container	8	11
Pieces per container	248	682
Dimension/Pallet	1214×1138 mm	1970×1138 mm
Gross weight/pallet	766Kg	1538Kg

I-V CURVE



YQVK-445M/I-V



OPERATING CHARACTERISTICS

Operating Module Temperature	-40°C to +85°C
Maximum System Voltage	1500 DC (IEC)
Maximum Series Fuse Rating	20A
Power Tolerance	0/+5W

TEMPERATURE CHARACTERISTICS

Nominal Operating Temperature (NOCT)	45±2°C
Temperature Coefficient of Pmax	-0.36%°C
Temperature Coefficient of Voc	-0.28%°C
Temperature Coefficient of Isc	+0.05%°C

Note: Due to continuous technical innovation, R&D and improvement, technical data above mentioned may be of modification accordingly. YQ SOLAR have the sole right to make such modification at anytime without further notice.